

Southbury Primary School Newsletter.

26th June 2026



Dream Big, Fly High!

Important dates.

- 1st July—Cultural Diversity Day and Summer Fun Day
- 2nd June— 1 class assembly 10am
- 2nd & 3rd July—Y6 transition days
- 6th July—Welcome to Reception meeting
- 7th July—Y4 Music Festival at Galliard School
- 8th July—Inset Day - School Closed**
- 10th July—Last day of term for Nursery
- 10th July—Reports sent home
- 13th July—Y6 Production to parents 6pm
- 14th July—Coffee morning
- 14th July—Nursery Open Morning
- 15th July 9:15am—Rocksteady concert
- 15th July—Reception end of year celebration
- 17th July—Y6 leavers' assembly 9:15am
- Last day of term—school finishes at 1:15pm**
- 2nd September—First day of term for years 1-6

Welcome from Mrs. Panteli.

I hope you are managing to keep cool as the extreme weather warnings continue. I would like to thank you for your understanding in our decision to close the school. Decisions like this are never easy or taken lightly. This being said, the health and safety of the children and my staff is always my priority and due to the extreme temperatures in the classrooms, it became clear that we could not keep the children cool enough at school. As you have seen, we have moved Summer Fun Day to next Wednesday, where it will be celebrated alongside Cultural Diversity Day. It would be lovely to see you all after school, to share some traditional cultural dishes and take part in some Summer Fun Day activities with your child.

Attendance and Punctuality.

Overall attendance for week ending 19th June

94.1%

Attendance winners 19th June

1st place - Y5 Buttercup Class with 100%

2nd place - Y4 Primrose Class with 99.09%

3rd place - Y3 Sunflower Class with 98.28%

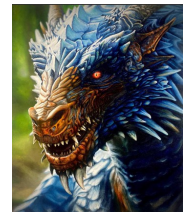
Our Value this half term is...

Responsibility

This half term, we will be looking at what it means to be responsible and why it is important to take responsibility for ourselves and our actions. Speak to your child about ways that they can demonstrate being responsible at home, at school and within the community.

Local Artist Visit

You may remember that after Dragon Discovery Week, local artist James Wellbrook visited the winning artists from each year group to create an artist's representation of their work using oils on canvas. This week, their pieces were finally completed. The artwork will be on permanent display in the school and each child received their own copy of the artwork that he created for them.



Sports Day

The children had a fantastic time at Sports Day last week. They all took part in their events with pride and it was lovely to see them having so much fun. A highlight of the day was the parents' races and the teachers vs parents tug of war! It created such a warm, community spirit and we are so grateful to all of you who took part! As you can imagine, these events are not easy to organise so a huge thank you to Mrs Cinotti, with support from Mr Camp for organising such a lovely day!



Borough Athletics

Children across KS2 represented the school in the Borough Athletics competition. They did brilliantly, showing perseverance and team spirit. Well done to all and a huge thank you, once again, to Mrs Cinotti for organising the event.



What have we been up to?

Year 6

Year 6 enjoyed their football coaching session with coaches from Tottenham Hotspur Football Club. They got to learn new skills and put them into practice with a football match!



Reception

The children in Jasmine Class found a fun way to keep cool. They enjoyed splashing and travelling through the water trays, exploring the water and having lots of fun with their friends!



Year 2

Snowdrop Class enjoyed a trip to the Ragged School Museum as part of their History topic. They learned about Victorian school life and discovered what daily life was like for children in the past.



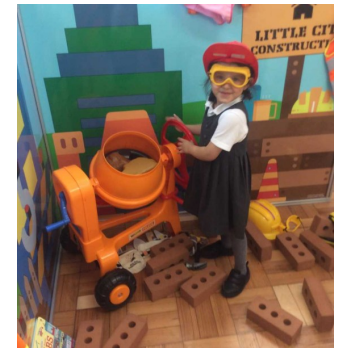
Year 3

In Computing, Year 3 children are continuing to develop their word processing skills. They are learning how to type, edit and format text effectively, using a range of tools to improve the presentation of their work. The children are growing in confidence as they learn how digital technology can help them create clear and well-organised documents.



Nursery

The nursery children and terrific 2s had a fantastic time at their little city experience where they enjoyed various role play experiences. Gemma who runs little city Enfield commented on the children's excellent behaviour and sharing skills. Well done!



Year 4

Year 4 had the best time jumping at AirHop trampoline park - we certainly burned off some energy!!



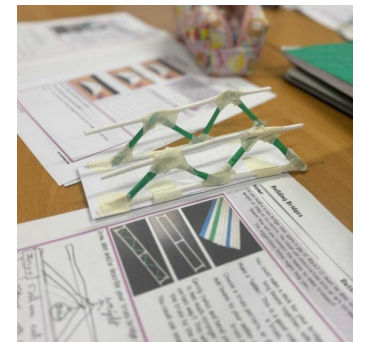
Year 1

Year 1 enjoyed their football coaching session with coaches from Tottenham Hotspur Football Club. They learnt lots of new skills and had a great afternoon!



Year 5

Year 5 have been continuing to learn about and make different bridge structures, investigating maximum load of each type. This week they built a truss bridge.



After School Cooking Club.

This week in After School Cooking Club, the children made chocolate mud cakes! They worked together to measure, mix and bake the ingredients and got to enjoy their yummy desserts at the end!



After School Gardening Club.

After receiving a grant from the London Children's Flower Society to help transform our school into a bee and insect friendly space, the gardening club got straight to work. They have been busy researching bee friendly flowers and planning how to areas will look. Last week, they started planting their flowers, working together and learning new skills!



**ROCK
STEADY**

ROCK AND POP BAND LESSONS

HERE IN SCHOOL



Amplifies confidence, wellbeing and social skills

- No experience required and takes place in school.
- All instruments for lessons provided.
- Lessons led by highly trained musicians.
- Termly school concerts for friends and family.
- Ofqual-regulated, exam-free Trinity Music qualification.
- Learn up to 300 band, performance, and musicianship skills.

**BOOK YOUR
CHILD'S PLACE
ONLINE!**



0330 113 0330 (Mon-Thurs 8am-8pm, Fri 8am-6pm, local rate)

rocksteadymusicschool.com

SOUTHBURY SCHOOL

NURSERY

DREAM BIG. FLY HIGH!

PLACES AVAILABLE!

SWANSEA ROAD, EN3 4JG



SOUTHBURY SCHOOL NURSERY

DREAM BIG. FLY HIGH!

A happy, inclusive and supportive environment where children thrive!

15 HOURS FUNDED
CHILDCARE FOR
TWO YEAR OLDS.

FOR ELIGIBLE
FAMILIES

UP TO 30 HOURS
FUNDED
CHILDCARE FOR
THREE YEAR OLDS.

FOR ELIGIBLE
FAMILIES

FOR MORE INFORMATION OR TO BOOK A VISIT
TO SEE OUR SCHOOL, PLEASE CONTACT THE

OFFICE: 080 8804 1710

OFFICE@SOUTHBURY.ENFIELD.SCH.UK

SWANSEA ROAD, EN3 4JG



strengthening families strengthening communities

Programme for Parents/Carers

Strengthening Families, Strengthening Communities (SFSC)

is a 13-week inclusive evidence-based parenting programme for all parents and carers of children aged 0-18.

The programme will help parents/carers think about how their experiences, culture, upbringing, and family background have influenced their parenting style.

It will also help parents/carers answer some important parenting questions, such as:

- How do I build a better relationship with my child?
- How can I motivate my child to try their best at school?
- How do I encourage my teenager to make better decisions?
- How do I put boundaries in place with my child?
- How do I connect with the wider communities and services in my area?

Who is it for? All parents/carers of any ethnic and faith background

How long? 13 weeks - each week you attend a 3-hour session in person

Programme ends with a certificate award ceremony

How to Book?

[Strengthening Families](#),
[Strengthening Communities Programme](#) or scan QR code



Accredited by

www.enfield.gov.uk



Welcome to the Ponders End Youth & Family Hub

All families need support from time to time to help their babies and children thrive, whether that's from friends, family, volunteers, or professionals.

Ponders End Youth & Family Hub brings together lots of different services for children and families, making it easier for families to get the help they need at the right time. We offer help and support for families, from pregnancy up until age 19, or 25 for young people with special educational needs and disabilities.

Our Youth and Family Hub provide support for any family, child or young person living in Enfield who needs them. Our doors are open to everyone, ensuring that families get the help and support they need.



Who can I see, speak to & find out more / ask for help?

There is a Family Navigator at the hub to support families to access information, advice, and services.

To find out more:

Call – 0208 379 2002

Email – pondersendfamilyhub@enfield.gov.uk

Over the coming months extra activities will be added to the hub schedule; support for parents and carers through pregnancy and up until their child is 2 years old, and opportunities for families with children under 5, to learn, develop and have fun.



Where to find us

Ponders End Family & Youth Hub: 141 South Street, EN3 4PX

Next to Oasis Hadley Academy – what3words [///pink.sleeps.filed](#)

Buses:

- 191 bus stop PZ from Edmonton Green towards Enfield Town/[Brimmsdown](#)
- 191 bus stop PU from [Brimmsdown](#)/Enfield Town towards Edmonton Green

Ponders End Rail Station:

Greater Anglia Services between Liverpool Street and Hertford East.

Please see page 2, for the latest Ponders End Youth & Family Hub activity Schedule.

As we continue to update the schedule with new services as and when they are introduced, please use the QR code to ensure you remain up to date with all the latest activity taking place from Ponders End Youth & Family Hub.



<https://www.enfield.gov.uk/services/children-and-education/family-hubs>





Dream Big, Fly High!

Term Dates **Academic Year 2025/26**

Autumn Term

Monday 1 September – Friday 19 December 2025

Half Term Holiday

Monday 27 October – Friday 31 October 2025

Spring Term

Monday 5 January – Friday 27 March 2026

Half Term Holiday

Monday 16 February – Friday 20 February 2026

Summer Term

Monday 13 April – Monday 20 July 2026

Bank Holidays – School Closed

Monday 4 May 2026

Half Term Holiday

Monday 25 May – Friday 29 May 2026

Inset Days: School Closed

Monday 1 September 2025

Tuesday 2 September 2025

Friday 5 December 2025

Wednesday 8 July 2026

Monday 20 July 2026



Dream Big, Fly High!

Term Dates **Academic Year 2026/27**

Autumn Term

Wednesday 2 September – Friday 18 December 2026

Half Term Holiday

Monday 26 October – Friday 30 October 2026

Spring Term

Monday 4 January – Thursday 25 March 2027

Half Term Holiday

Monday 15 February – Friday 19 February 2027

Summer Term

Monday 12 April – Thursday 22 July 2027

Bank Holidays – School Closed

Monday 3 May 2027

Half Term Holiday

Monday 31 May – Friday 4 June 2027

Inset Days: School Closed

Wednesday 2 September 2026

Friday 4 December 2026

Wednesday 3 March 2027

Monday 7 June 2027

Wednesday 14 July 2027

Join a GP today

Anyone can
register for free

Health support for
you and your family



Get the right care for you and your family by registering with a GP practice

Being registered with a GP practice helps make sure you and your child can get the right care, at the right time - from vaccinations and check-ups to everyday health concerns.

Anyone can register with a GP practice

You are entitled to register and receive care from a GP practice, regardless of your circumstances.

You do not need:

- Proof of address
- Proof of immigration status
- Identification (ID)
- An NHS number

How to register

Simply contact your local GP practice:

- Visit the practice and ask the reception team for help to register

Or find out more at nhs.uk/register



nhs.uk/register



nhs.uk/register





Easy Fundraising



If you shop online, then we would like to ask you to help our school to raise some money by using our Easy Fundraising page.

It does not cost you a penny extra, and the school receives a percentage of all purchases made. Any money raised will go towards benefiting all of our pupils at Southbury.

Please go onto the link provided below. Once you are on the website, all you need to do is click on 'Support this cause' and then continue your shopping by choosing the website (or searching for the retailer) you would like to purchase anything from.

It really is that easy!

<http://www.easyfundraising.org.uk/causes/southburypse>



SOUTHBURY PRIMARY SCHOOL

AFTER SCHOOL CLUB.

Reception - Year 6



About Us

We are an after school club that provides childcare and activities for just £6 per session for up to 2.5 hours. If you would like your child to attend a non sports related after-school, this is the place! Please contact the office for how to enrol your child.

Activities include:

- ✓ Cooking
- ✓ Games
- ✓ Computing
- ✓ Arts and Crafts