

# Year 2 Autumn Term 2 SPaG Mat

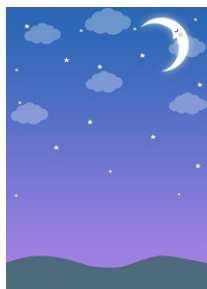
1

**a**  
Add either ? . or ! for a question, statement or an exclamation sentence.

The stars are very pretty tonight

What a great night to look at the stars

Where have all the stars gone



**b**  
Make longer words by adding the suffix -er or -ful. Write the new word in full. Remember some letters might need to change.

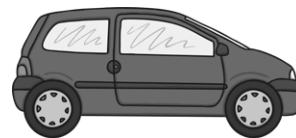
dark \_\_\_\_\_

happy \_\_\_\_\_

hope \_\_\_\_\_

**c**  
Which of these words is a verb?

- Ben
- car
- drive



**d**  
Oops Mr Whoops has made THREE punctuation mistakes in his sentence. Can you underline the words that should start with a capital letter?

Next saturday benji and santi will be driving a pretty campervan.



**e**  
List THREE adjectives to describe what you see in this picture.



**f**  
Practise writing these year 2 common exception word spellings.

door door **door** \_\_\_\_\_

find find **find** \_\_\_\_\_

child child **child** \_\_\_\_\_

most most **most** \_\_\_\_\_

**a**  
Add either ? . or ! for a question, statement or an exclamation sentence.

The stars are very pretty tonight.

What a great night to look at the stars!

Where have all the stars gone?

**b**  
Make longer words by adding the suffix -er or -ful. Write the new word in full. Remember some letters might need to change.

dark **darker**

happy **happier**

hope **hopeful**

**c**  
Which of these words is a verb?

Ben

car

drive

**d**  
Oops Mr Whoops has made THREE punctuation mistakes in his sentence. Can you underline the words that should start with a capital letter?

Next **saturday benji** and **santi** will be driving a pretty campervan.

**e**  
List THREE adjectives to describe what you see in this picture.

Answers will vary, accept any reasonable adjectives.

E.g. cold, chilly, empty.

**f**  
Practise writing these common exception word spellings.

Optional - check your school's handwriting rules have been followed.

door door **door door door door**  
**door door door door**

find find **find find find find**

child child **child child child**

most most **most most most**  
**most most most most**